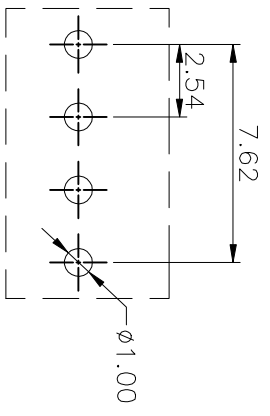
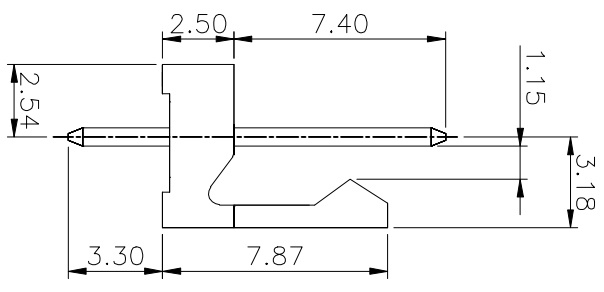
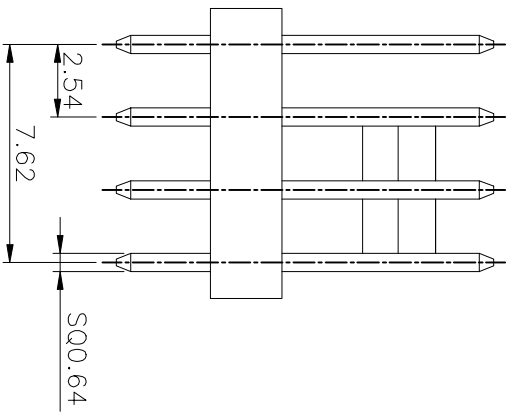
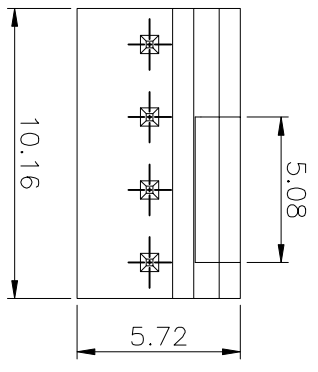


REV	DESCRIPTION	DATE	DWN	AP/D
A	RELEASED	03Nov09	MD	JY
A1	<b>A</b>	25Feb2010	Ben	JY

NOTE:

- 1.MATERIAL:  
HOUSING: (SEE TABLE) UL 94V-0 COLOR: WHITE  
POSTS: BRASS
- 2.FINISH: 100 $\mu$ " MIN. BRIGHT TIN OVER 50 $\mu$ " MIN. NICKEL PLATED.
- 3.ELECTRICAL:  
POSTS RESISTANCE: 40 MLLIOHMS MAX.  
INSULATION RESISTANCE: 1000 MEGOHMS MIN.  
DIELECTRIC WITHSTANDING: 500V AC.  
CURRENT RATING: 2.5A MAX.  
VORAGE RATING: 500V AC/DC MAX.
- 4.ENVIRONMENTAL:  
OPERATING TEMPERATURE: -40° TO +85°C.



RECOMMEND P.C.B LAYOUT  
PCB TOLERANCE:±0.05

A

B

C

D

8 7 6 5 4 3 2 1

**A**

PA66+30%G.F	--	11-0015-02
PA6T	WU4213204IW0TGS0	11-0015-01
HOUSING MATERIAL	OLD PRAT NO.	NEW PRAT NO.
<b>Zhongxiang Electron Science CO.,LTD</b>		
2.54 WAFER CONNECTOR		

TOLERANCES UNLESS OTHERWISE SPECIFIED:		MM
0 PLG	± .	25Feb2010
1 PLG	± 0.3	25Feb2010
2 PLG	± 0.2	
3 PLG	± 0.15	
4 PLG	± .	
ANGLES		± .3°
MATERIAL SEE NOTE		
FINISH SEE NOTE		
PROJECTION SEE NOTE		
APPLICATION SPEC		
WAFER_01_A		
DIMENSIONS: MM		

SIZE	DRAWING NO	RESTRICTED TO
A3	C-11-0015	--
CUSTOMER DRAWING	SCALE	SHEET
	1	1 of 1
		REV
		A1