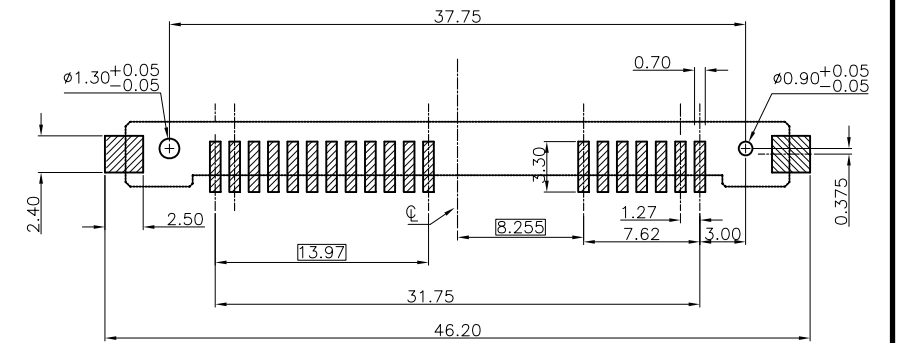
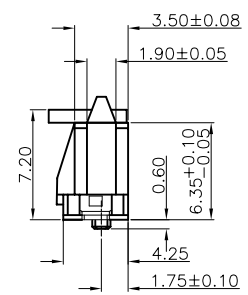
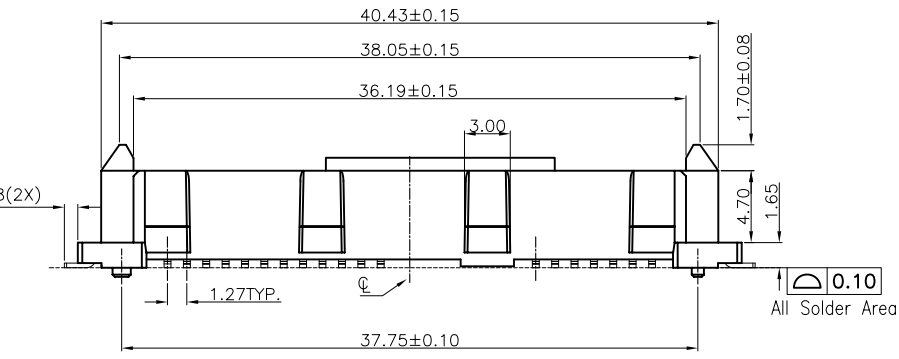


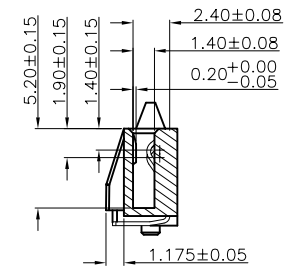
3D view

NOTE:

- 1. MATERIAL:
HOUSING: LCP, UL 94V-0, BLACK COLOR.
CAP: LCP, UL 94V-0, BLACK COLOR.
CONTACTS: PHOSPHOR BRONZE.T=0.25mm
PEGS: BRASS.T=0.30mm
- 2. FINISH:
CONTACTS: (SEE TABLE) GOLD PLATED ON CONTACT AREA, 2.54µm [100µ"] MIN. MATTE-TIN ON SOLDER TAIL, WITH ENTIRE CONTACT UNDERPLATED 1.27µm [50µ"] MIN. NICKEL.
PEGS: 2.54µm [100µ"] MIN. BRIGHT-TIN OVER 1.27µm [50µ"] MIN. NICKEL PLATED.
- 3. ELECTRICAL:
CONTACT RESISTANCE: 45 mΩ MAX.
INSULATION RESISTANCE: 1000 MΩ MAX.
DIELECTRIC WITHSTANDING VOLTAGE: 500V AC
CURRENT RATING: 1.5A
VOLTAGE RATING: 12V AC
- 4. ENVIRONMENTAL:
OPERATING TEMPERATURE: -25°C TO +85°C



RECOMMEND PCB LAYOUT
TOLERANCE:±0.05



SECTION

YES	[15µ"]	09-0142-02
YES	G/F	09-0142-01
HalogenFree	MIN. GOLD THICKNESS	PART NUMBER

JS HAOGUO(Zhongxiang) Limited Company

ECN(DCN) NO.	REV.	DATE	DESCRIPTION	CHANGE	APVD	APVD	DAVID_ZHONG	UNIT	mm	SIZE	A4	Third Angle Projection
	A	17Oct12	RELEASED	lee	D.Z	CHKD	CIYONG_JIANG	Drawing No.	C-09-0142-	Scale	1 : 1	Sheet 1 of 1

TOLERANCES UNLESS OTHERWISE SPECIFIED	
X. ±0.30	X." ±2"
.X ±0.25	X.X' ±1"
.XX ±0.15	
.XXX ±0.10	

Customers Drawing	TITLE: SATA 7+12P, VERTICAL SMT TYPE
Part No.	Scale 1 : 1
Drawing No.	Sheet 1 of 1