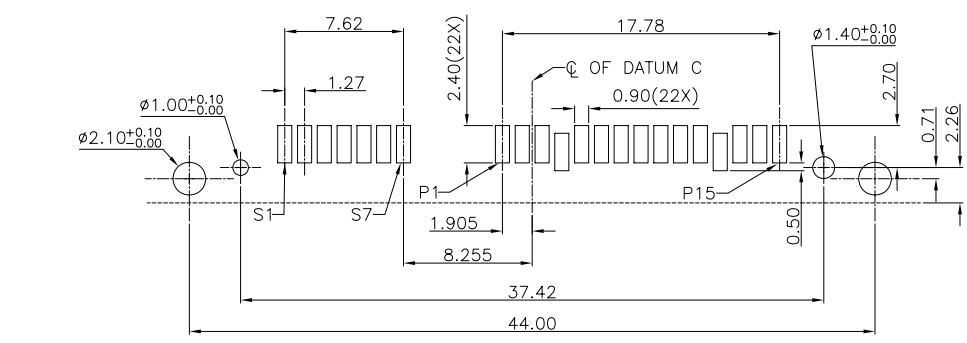
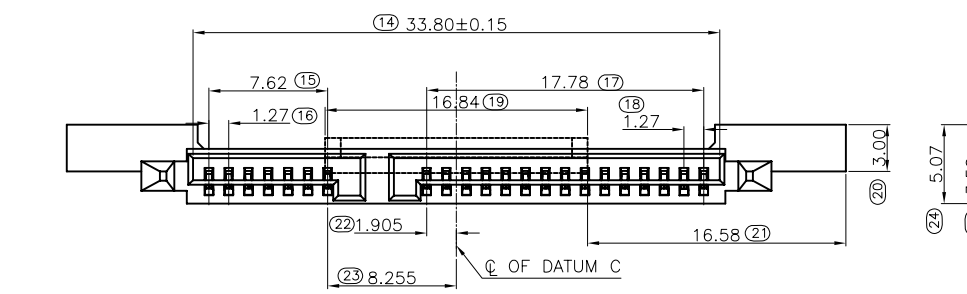
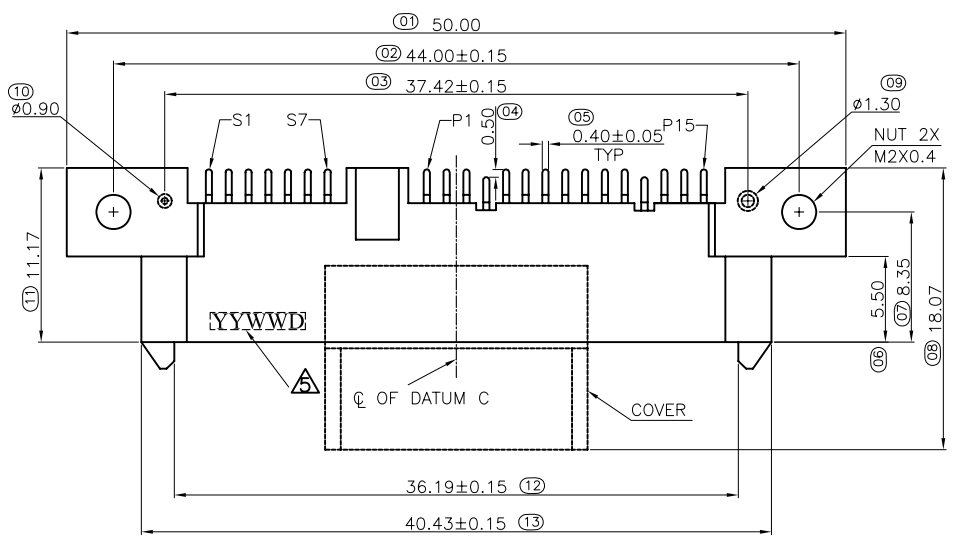


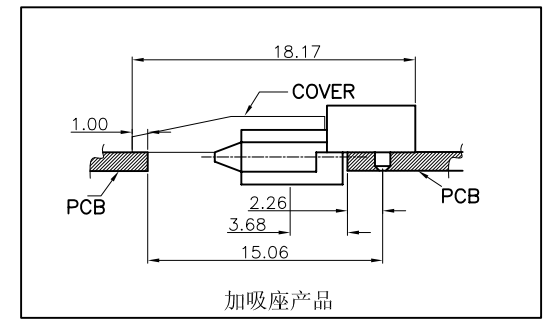
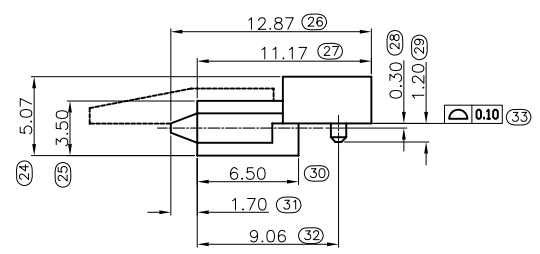
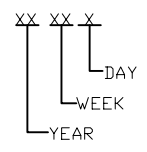
REV.	DESCRIPTION	DATE	DWN	APVD
A	RELEASED	17NOV2011	Lee	WZ



RECOMMEND PCB LAYOUT  
PCB THICKNESS=1.20mm, TOLERANCE:±0.05

NOTE:

- MATERIAL:  
HOUSING: LCP, UL 94V-0, BLACK COLOR.  
CAP: LCP, UL 94V-0, BLACK COLOR.  
CONTACTS: PHOSPHOR BRONZE.T=0.20mm  
NUT:BRASS.
- FINISH:  
CONTACTS: (SEE TABLE) GOLD PLATED ON CONTACT AREA, 2.54μm [100μ"] MIN. MATTE-TIN ON SOLDER TAIL, WITH ENTIRE CONTACT UNDERPLATED 1.27μm [50μ"] MIN. NICKEL.  
NUT: 1.27μm [50μ"] MIN. NICKEL PLATED.
- ELECTRICAL:  
CONTACT RESISTANCE: 45 mΩ MAX.  
DIELECTRIC WITHSTANDING VOLTAGE: 500V AC  
CURRENT RATING: 1.5A  
VOLTAGE RATING: 12V AC
- ENVIRONMENTAL:  
OPERATING TEMPERATURE: -25°C TO +85°C
- DATE CODE Color(數7C)



15μ"	09-0128-02
[G/F]	09-0128-01
MIN. GOLD THICKNESS	PART NUMBER

TOLERANCES UNLESS OTHERWISE SPECIFIED:	DWN 17NOV2011 Jackson Lee	<b>Zhongxiang Electron Science CO.,LTD</b> NAME SATA 22P, R/A SMT TYPE
0 PLC ± -	CHK 17NOV2011 CIYONG JIANG	
1 PLC ± 0.3	APVD 17NOV2011 Wei_ZHANG	
2 PLC ± 0.2	PRODUCT SPEC	
3 PLC ± 0.15	APPLICATION SPEC	SIZE DRAWING NO
4 PLC ± -	WEIGHT - GRAMS	A3 C-09-0128
ANGLES ± 3°	DIMENSIONS: MM	RESTRICTED TO
MATERIAL SEE NOTE	CUSTOMER DRAWING	SCALE
FINISH SEE NOTE	SCALE	SHEET 1 of 1
PROJECTION	REV A	