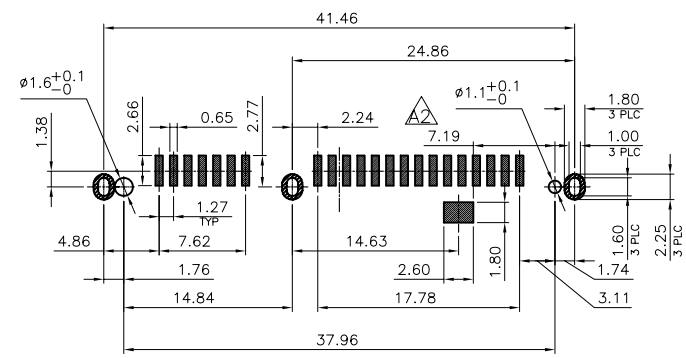
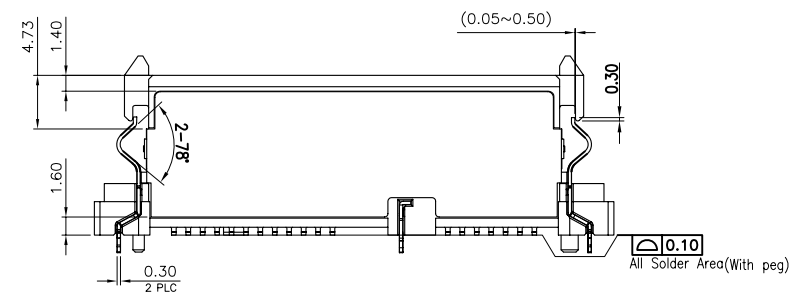
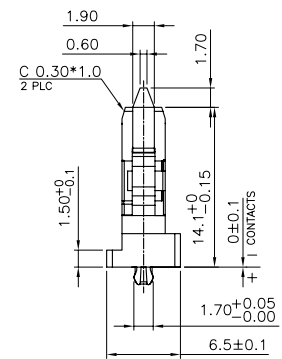
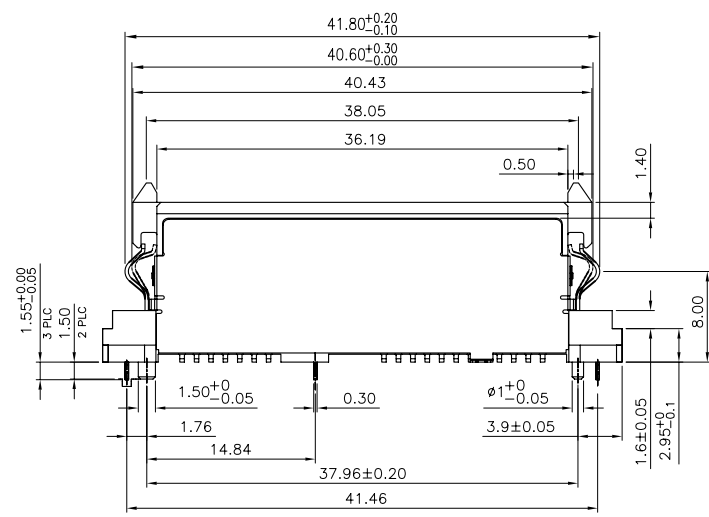
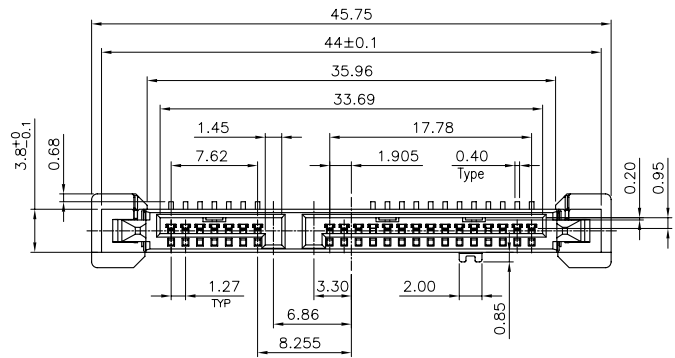


REV.	DESCRIPTION	DATE	DWN	APVD
A	RELEASED	18JUL11	YJ	WZ
A1		14SEP11	YJ	WZ
A2		14Aug01	kjp	WZ

NOTE:
 1. MATERIAL:
 HOUSING: LCP, UL 94V-0, BLACK.
 CONTACTS: PHOSPHOR BRONZE.
 BOARDLOCK: STAINLESS STEEL.
 SPRINGS & BOARDLOCK: STAINLESS STEEL SUS304-H.
 SHELL: STAINLESS STEEL.
 2. FINISH:
 CONTACTS: (SEE TABLE) GOLD PLATED ON CONTACT AREA, 100μm MIN MATTE-TIN PLATING ON SOLDER TAIL,
 WITH ENTIRE CONTACT UNDERPLATED 50μm MIN NICKEL.
 BOARDLOCK: 100μm MIN MATTE-TIN OVER 50μm MIN NICKEL PLATED.
 SHELL: 30μm MIN NI-PI PLATED
 SPRING & BOARDLOCK: 30μm MIN NI-PI PLATED.



RECOMMEND PCB LAYOUT
 PCB THICKNESS=1mm, TOLERANCE:±0.05

	GP	[15μm]	09-0117-02
	ROHS	[15μm]	09-0117-01
	Environmental standard	MIN. GOLD THICKNESS	PART NUMBER

TOLERANCES UNLESS OTHERWISE SPECIFIED: 0 PLC ± - 1 PLC ± 0.3 2 PLC ± 0.2 3 PLC ± 0.15 4 PLC ± - ANGLES ± 3°	DWN CIYONG JIANG 14SEP2011	Zhongxiang Electron Science CO.,LTD
MATERIAL SEE NOTE	CHK GAVIN CHEN 14SEP2011	
FINISH SEE NOTE	APVD WEI ZHANG 14SEP2011	NAME SATA 22P, VERTICAL SMT TYPE WITH SPRING (Rockit 3.50+Simple Dock)
PROJECTION 	APPLICATION SPEC WEIGHT DIMENSIONS: MM	SIZE A3
	CUSTOMER DRAWING	DRAWING NO C-09-0117
	SCALE -	RESTRICTED TO -
	SHEET 1 OF 1	REV A1