

NOTE:

1. MATERIAL:

HOUSING: HIGH TEMPERATURE PLASTICS.

CONTACTS: COPPER ALLOY.

SPRING WITH BOARDLOCKS: STAINLESS STEEL SUS304-H .

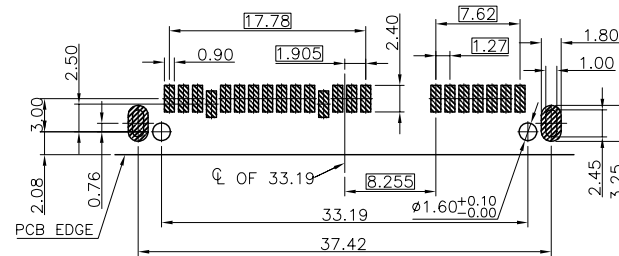
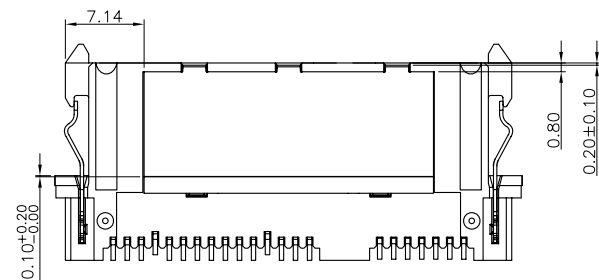
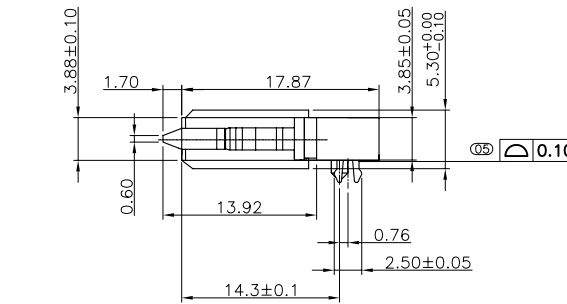
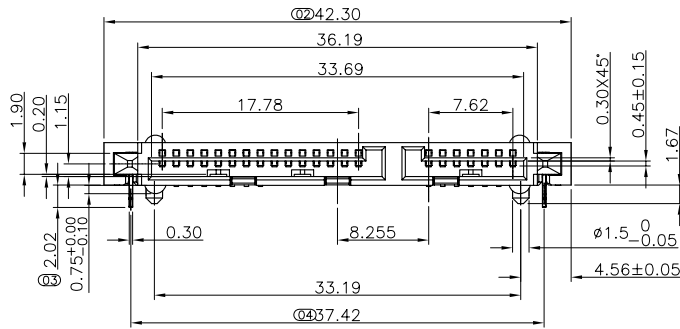
SHELL:STAINLESS STEEL.

2. FINISH:

CONTACTS: (SEE TABLE) GOLD PLATED ON CONTACT AREA,
100 μ " Min MATTE-TIN PLATING ON SOLDER TAIL,
WITH ENTIRE CONTACT UNDERPLATED 50 μ " Min NICKEL.

BOARDLOCKS WITH SPRING: 30 μ " Min NI-PI PLATED.

SHELL: 30 μ " Min NI-PI PLATED



RECOMMEND PCB LAYOUT
T=1mm, PCB TOLERANCE:±0.05

TABLE:

	TAPE REEL	[15 μ "]	09-0081-02
	TRAY	[15 μ "]	09-0081-01
	PACKING	MIN. GOLD THICKNESS	PART NUMBER

ECN(DCN) NO.	REV.	DATE	DESCRIPTION	CHANGE	APVD	APVD	DAVID_ZHONG
	B	12JUN10	ECN10061201	A.X	J.Y	DWN	JUANPING_KUANG
	C1	07NOV11		YJ	WZ	CHKD	CIYONG_JIANG

TOLERANCES UNLESS OTHERWISE SPECIFIED	
X. ±0.30	X.' ±2'
.X ±0.25	.X.X' ±1'
.XX ±0.20	
.XXX ±0.10	

JS HAOGUO(Zhongxiang) Limited Company

Customers Drawing	TITEL:	Part No.	Scale
	SATA 22P, RIGHT ANGLE SMT TYPE.	SEE TABLE	4 : 1
Drawing No.	C-09-0081	Sheet	1 of 1

