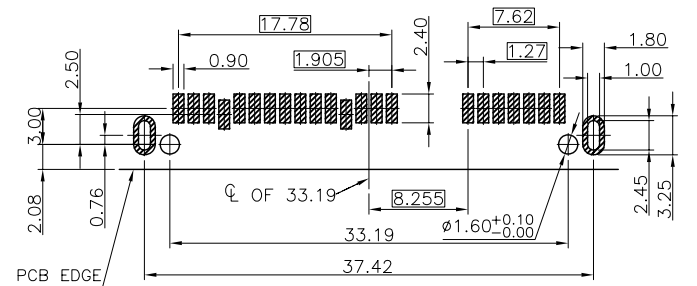
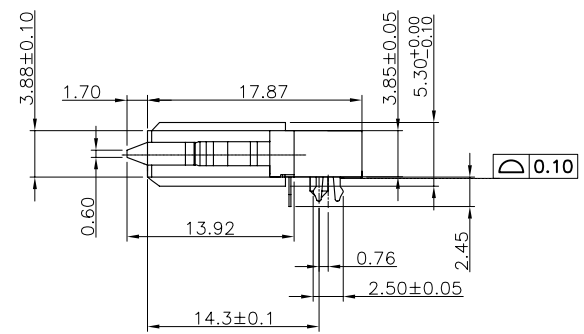
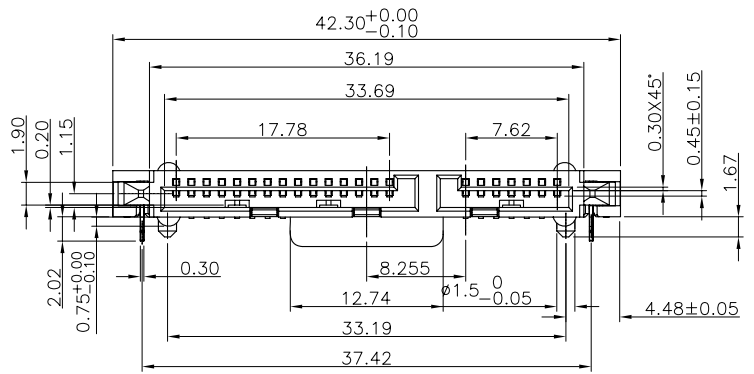
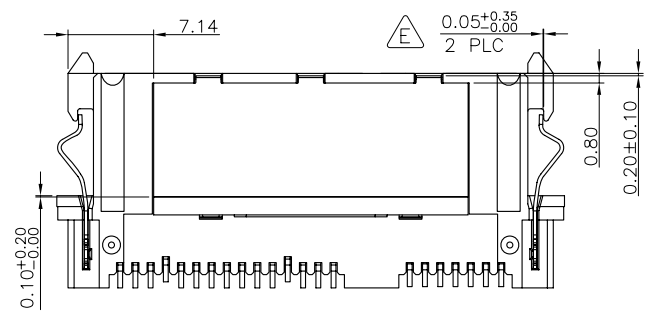


NOTE:
 1. MATERIAL:
 HOUSING: HIGH TEMPERATURE PLASTICS.
 CONTACTS: COPPER ALLOY.
 SPRING WITH BOARDLOCKS: STAINLESS STEEL SUS304-H.
 SHELL: STAINLESS STEEL.
 2. FINISH:
 CONTACTS: (SEE TABLE) GOLD PLATED ON CONTACT AREA,
 100μ" Min MATTE-TIN PLATING ON SOLDER TAIL,
 WITH ENTIRE CONTACT UNDERPLATED 50μ" Min NICKEL.
 BOARDLOCKS WITH SPRING: 30μ" Min NI-PI PLATED.
 SHELL: 30μ" Min NI-PI PLATED



RECOMMEND PCB LAYOUT
 T=1mm, PCB TOLERANCE:±0.05



△	GOLD FLASH	09-0061-02
	0.381μm [15μ"]	09-0061-01
	MIN. GOLD THICKNESS	PART NUMBER

TOLERANCES UNLESS OTHERWISE SPECIFIED		JS HAOGUO(Zhongxiang) Limited Company	
x. ±0.30	x.' ±2'	Customers Drawing	TITEL: SATA 22P, RIGHT ANGLE, SMT TYPE,
.x ±0.25	x.x' ±1'	Part No.	
.xx ±0.20		Drawing No.	C-09-0061
.xxx ±0.10		UNIT	mm

ECN(DCN) NO.	REV.	DATE	DESCRIPTION	CHANGE	APVD	APVD	DAVID_ZHONG	UNIT	mm	SIZE	A4	Third Angle Projection
	E1	20MAR2014	△	KJP	DZ	DWN	JUANJING_KUAN	Part No.		Scale	1:1	
	E	21JUL2011	△ECN11072101	YJ	WZ	CHKD	CIYONG_JIANG	Drawing No.		Sheet	1of1	