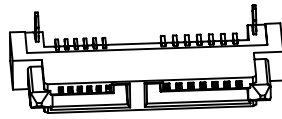
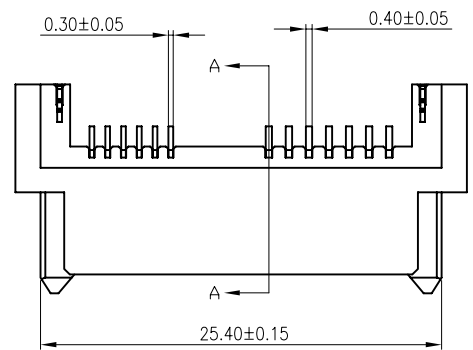
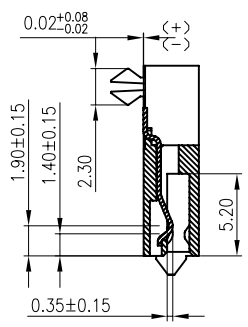
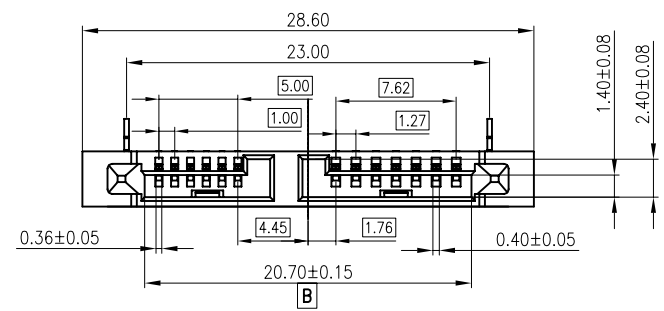


REV.	DESCRIPTION	DATE	DWN	APVD
A	RELEASED	21MAY2009	YF	DV

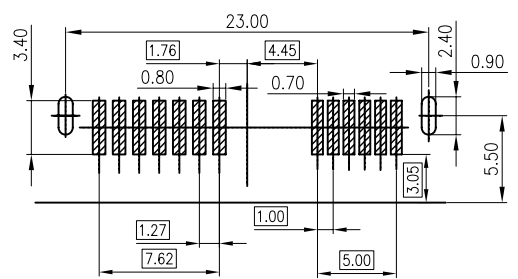


NOTE:

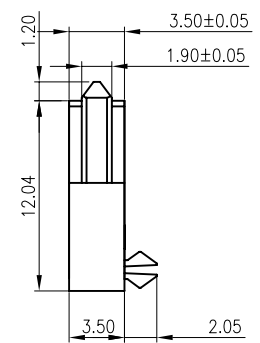
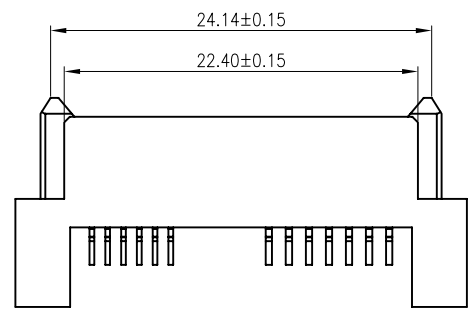
- MATERIAL:  
HOUSING: LCP WITH 30% GF, UL 94V-0, BLACK COLOR.  
CONTACTS: PHOSPHOR BRONZE.  
BOARDLOCKS: BRASS.
- FINISH:  
CONTACTS: 15μ" MIN. GOLD PLATED ON CONTACT AREA, 100μ" MIN. MATTE-TIN ON SOLDER TAIL, WITH ENTIRE CONTACT UNDERPLATED 50μ" MIN. NICKEL.  
BOARDLOCKS: 100μ" MIN. MATTE-TIN OVER 50μ" MIN. NICKEL ON ENTIRE BOARDLOCK.



SECTION A-A



RECOMMEND P.C.B LAYOUT  
PCB TOLERANCE:±0.05



09-0037-01  
PART NUMBER

TOLERANCES UNLESS OTHERWISE SPECIFIED:		DWN YONGFENG 21MAY2009	<b>Zhongxiang Electron Science CO.,LTD</b>	
0 PLC	± -	CHK GAVIN 21MAY2009		
1 PLC	± 0.3	APVD DAVID 21MAY2009	NAME	
2 PLC	± 0.2	PRODUCT SPEC	SATA_01(A)	
3 PLC	± 0.15	APPLICATION SPEC	SATA_01-1(A)	
4 PLC	± -	WEIGHT	A3 C-09-0037	
ANGLES	± 3°	DIMENSIONS:	MM	CUSTOMER DRAWING
MATERIAL	SEE NOTE	SIZE	DRAWING NO	RESTRICTED TO
FINISH	SEE NOTE	SCALE -		SHEET 1 of 1
PROJECTION		REV A		

SATA CONNECTOR,  
13 POSITION, RIGHT ANGLE, SMT.  
H=3.5mm