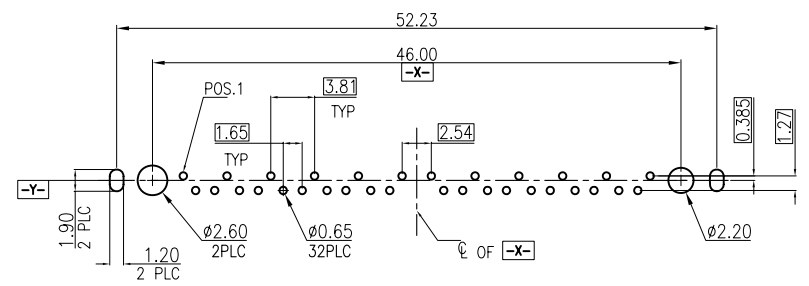
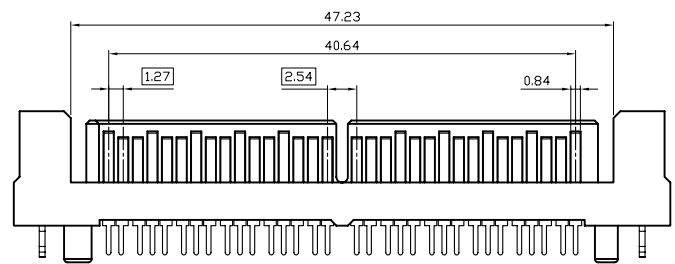
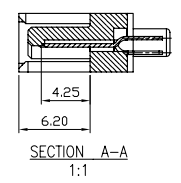
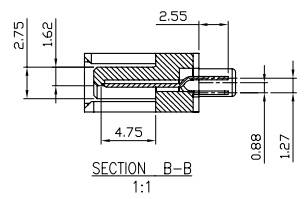
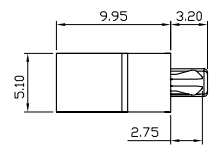
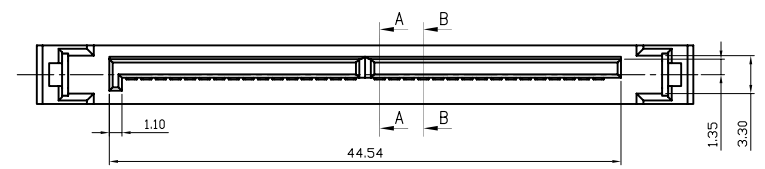
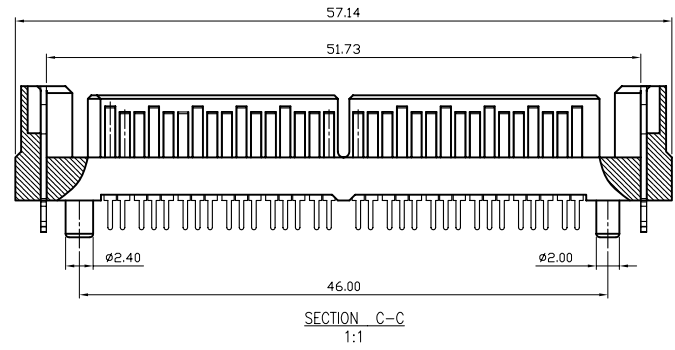
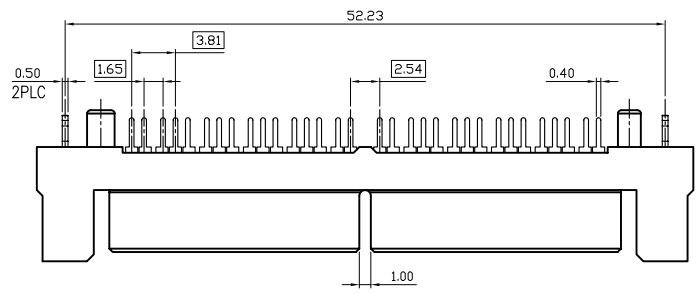


REV.	DESCRIPTION	DATE	DWN	APVD
A	RELEASED	12NOV09	A.X	J.Y



- MATERIAL:
HOUSING: LCP, UL94V-0, COLOR: BLACK.
CONTACTS: PHOSPHOR BRONZE T=0.30mm.
BOARDLOCKS: PHOSPHOR BRONZE T=0.5mm.
- POSTS:
CONTACT: (SEE TABLE) GOLD PLATING ON CONTACT AREA
2.54um [100μ"] MIN MATTE-TIN PLATING ON SOLDER TAILS
1.27um [50μ"] MIN NICKEL UNDER PLATING OVER ALL.
BOARDLOCK: 2.54um [100μ"] MIN MATTE-TIN OVER 1.27um [50μ"] MINNICKEL PLATED.
- ELECTRICAL:
CONTACT RESISTANCE: 45 mΩ MAX.
DIELECTRIC WITHSTANDING VOLTAGE: 500V AC
CURRENT RATING: 1.5A
VOLAGE RATING: 12V AC
- ENVIRONMENTAL:
OPERATING TEMPERATURE: -25°C TO +85°C

0.381um [15μ"]	-	09-0032-02
0.762um [30μ"]	SA0711032FB0K0S2	09-0032-01
PLATING	OLD PART NUMBER	NEW PART NUMBER

TOLERANCES UNLESS OTHERWISE SPECIFIED:	DWN ANDY_XIAO 12NOV2009	Zhongxiang Electron Science CO.,LTD	
0 PLC ± -	CHK GAVIN_CHEN 12NOV2009		
1 PLC ± 0.3	APVD JACKY YANG 12NOV2009	NAME	
2 PLC ± 0.2	PRODUCT SPEC	SATA 16+16P, VERTICAL, DIP, PLUG.	
3 PLC ± 0.15	APPLICATION SPEC	SIZE	DRAWING NO
4 PLC ± -	SEE NOTE	A3	C-09-0032
ANGLES ± 3°	PROJECTIDN	WEIGHT	RESTRICTED TO
MATERIAL	SEE NOTE	DIMENSIONS: MM	CUSTOMER DRAWING
FINISH	SEE NOTE	SCALE	SHEET 1 of 1
PROJECTION	SEE NOTE	REV	A