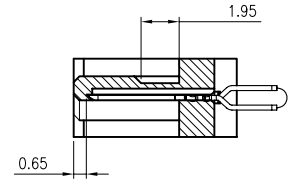
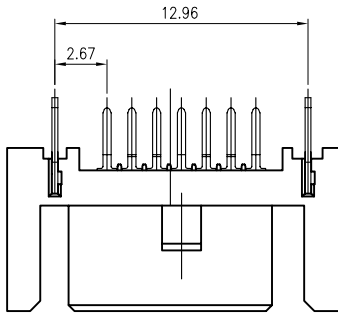


| REV. | DESCRIPTION | DATE | DWN | APVD |
|------|-------------|---------|-----|------|
| A | RELEASED | 28AUG09 | A.X | J.Y |



SECTION A-A

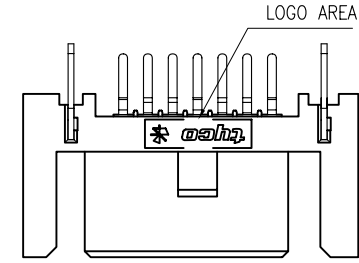
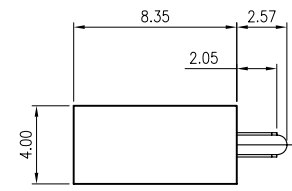
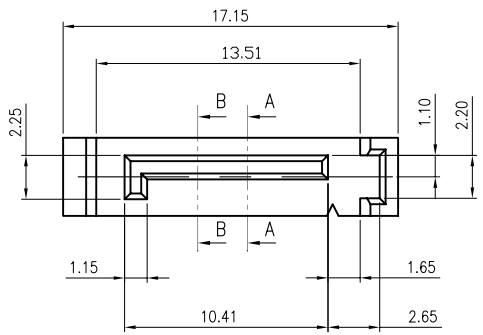
NOTE:
 PRODUCTS MUST CONFORM TO JS SPEC JS-GC03143-A1.

1.MATERIAL:
 HOUSING: (SEE TABLE), UL94V-0; COLOR:BLACK;
 CONTACT: BRASS. T=0.25mm
 BOARDLOCK :BRASS. T=0.30mm

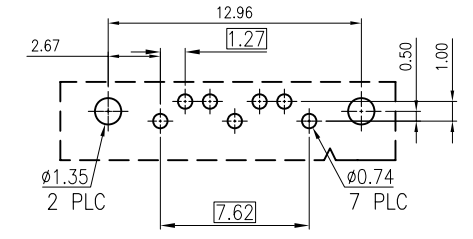
2.FINISH:
 CONTACT: (SEE TABLE) GOLD PLATING ON CONTACT AREA
 2.54um [100μ"] MIN. (SEE TABLE) TIN PLATING ON SOLDER TAILS
 1.27um [50μ"] MIN. NICKEL UNDERPLATING OVER ALL
 BOARDLOCKS: 2.54um [100μ"] MIN. (SEE TABLE) TIN OVER 1.27um [50μ"] MIN.. NICKEL PLATED.

3.ELECTRICAL:
 CONTACT RESISTANCE: 45 mΩ MAX.
 DIELECTRIC WITHSTANDING VOLTAGE: 500V AC
 CURRENT RATING: 1.5A
 VOLAGE RATING: 12V AC

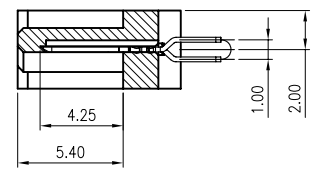
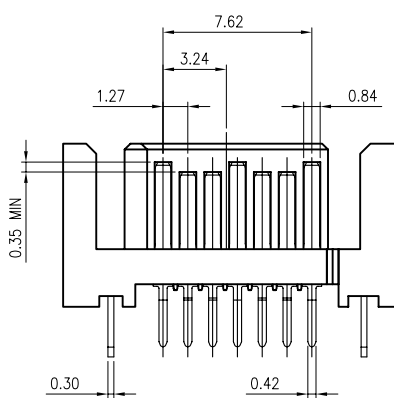
4.ENVIRONMENTAL:
 OPERATING TEMPERATURE: -25°C TO +85°C



WITH TYCO LOGO TYPE



RECOMMENDED PCB LAYOUT
 TOLERANCE: ±0.05



SECTION B-B
 1:1

| | | | | | | | |
|----------------|---------|---------------|-------------|-------------|---------------|------------------|-----------------|
| NO TYCO LOGO | LCP | BLACK | BRIGHT TIN | BRIGHT TIN | G/F | ----- | 09-0010-05 |
| WITH TYCO LOGO | NY6T | BULE(293C) | MATTE TIN | MATTE TIN | 15μ" | SC3209707FL0MBS1 | 09-0010-04 |
| NO TYCO LOGO | | | BRIGHT TIN | BRIGHT TIN | | SC3209707FL00BS0 | 09-0010-03 |
| | LCP | BLACK | BRIGHT TIN | BRIGHT TIN | | SC3209707FB00BS0 | 09-0010-02 |
| TYCO LOGO | HOUSING | HOUSING COLOR | BOARD LOCKS | SOLDER TAIL | GOLD THICKNES | OLD PART NUMBER | NEW PART NUMBER |
| | | | | | | SC3709707FB00BS0 | 09-0010-01 |

| | | | | | |
|--|---------------|-----------|--|--|---------------|
| TOLERANCES UNLESS OTHERWISE SPECIFIED: | DWN | 28AUG2009 | Zhongxiang Electron Science CO.,LTD | | |
| 0 PLC ± - | CHK | 28AUG2009 | | | |
| 1 PLC ± 0.3 | GAVIN | | | | |
| 2 PLC ± 0.2 | APVD | 28AUG2009 | | | |
| 3 PLC ± 0.15 | JACKY YANG | | NAME | | |
| 4 PLC ± - | PRODUCT SPEC | | SATA 7P VERTICAL A TYPE DIP PLUG | | |
| ANGLES ± 3° | JS-GC03143-A1 | | SIZE | | |
| MATERIAL | SEE NOTE | | DRAWING NO | | RESTRICTED TO |
| FINISH | SEE NOTE | | A3 | | C-09-0010 |
| PROJECTION | WEIGHT | | DIMENSIONS: | | MM |
| | | | CUSTOMER DRAWING | | SCALE |
| | | | SHEET | | 1 of 1 |
| | | | REV | | A |