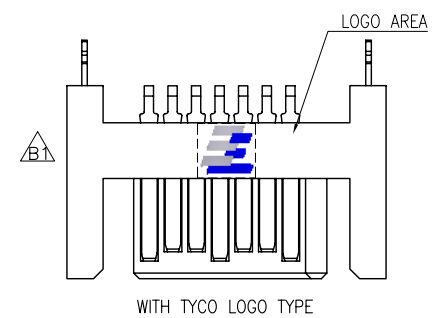
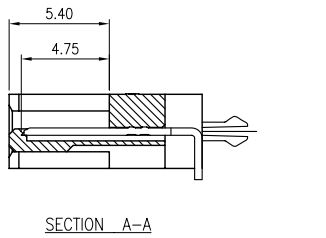
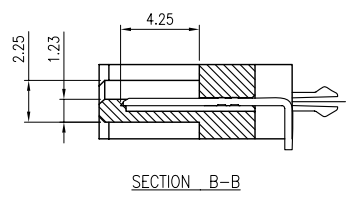
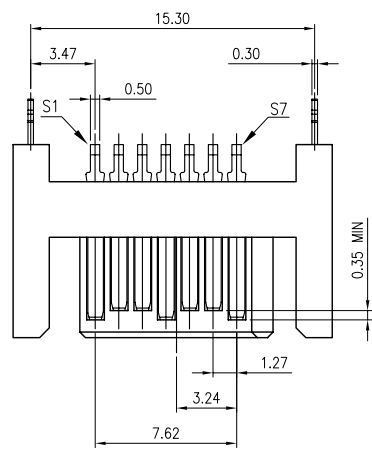
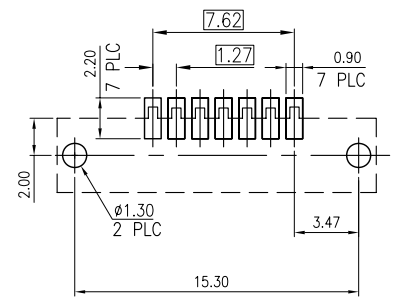
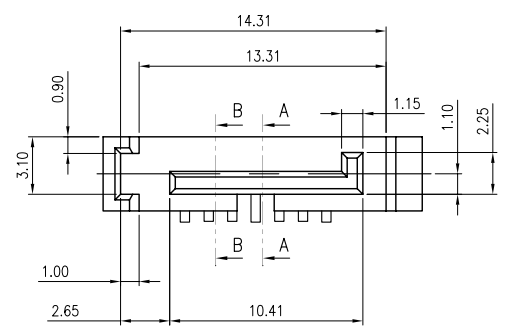


REV.	DESCRIPTION	DATE	DWN	APVD
A	RELEASED	28AUG09	A.X	J.Y
B1		14SEP11	P.H	W.Z

NOTE:
 PRODUCTS MUST CONFORM TO JS SPEC JS-GC03143-A1.
 1.MATERIAL:
 HOUSING: (SEE TABLE). UL94V-0; COLOR:BLACK;
 CONTACT: BRASS. T=0.40mm
 BOARDLOCK :BRASS. T=0.30mm
 2.FINISH:
 CONTACT: (SEE TABLE) GOLD PLATING ON CONTACT AREA
 2.54um [100μ"] MIN. (SEE TABLE) TIN PLATING ON SOLDERTAILS
 1.27um [50μ"] MIN. NICKEL UNDERPLATING OVER ALL
 BOARDLOCKS: 2.54um [100μ"] MIN. (SEE TABLE) TIN OVER 1.27um [50μ"] MIN. NICKEL PLATED.
 3.ELECTRICAL:
 CONTACT RESISTANCE: 45 mΩ MAX.
 DIELECTRIC WITHSTANDING VOLTAGE: 500V AC
 CURRENT RATING: 1.5A
 VOLTAGE RATING: 12V AC
 4.ENVIRONMENTAL:
 OPERATING TEMPERATURE: -25°C TO +85°C



TYCO LOGO	HOUSING	BOARD LOCKS	SOLDER TAIL	GOLD THICKNESS	OLD PART NUMBER	NEW PART NUMBER
WITHOUT TYCO LOGO	LCP	MATTE TIN	MATTE TIN	G/F	-----	09-0009-10
		BRIGHT TIN	BRIGHT TIN	15μ"	SC3712107FB004M0	09-0009-09
		MATTE TIN	MATTE TIN	30μ"	SC3712107FB0A0A0	09-0009-08
WITH TYCO LOGO	LCP	BRIGHT TIN	BRIGHT TIN	15μ"	SC3212107FB000S0	09-0009-07
				G/F	SC3212107FB0C0S0	09-0009-06
				G/F	SC3712107FB0C4M0	09-0009-05
WITH TYCO LOGO	LCP	MATTE TIN	MATTE TIN	G/F	SC4712107FB0C0A1	09-0009-04
					SC4712107FB0FOA1	09-0009-03
WITH TYCO LOGO	LCP	BRIGHT TIN	BRIGHT TIN	15μ"	SC4712107FB0H0A1	09-0009-02
					SC4712107FB000A1	09-0009-01



RECOMMENDED PCB LAYOUT
 TOLERANCE: ±0.05

TOLERANCES UNLESS OTHERWISE SPECIFIED: 0 PLC ± 0.3 1 PLC ± 0.2 2 PLC ± 0.15 3 PLC ± 0.15 4 PLC ± 0.15 ANGLES ± 3°	DWN PING HE 14SEP2011 CHK CUYONG JIANG 14SEP2011 APVD WEI ZHANG 14SEP2011 PRODUCT SPEC JS-GC03143-A1 APPLICATION SPEC FINISH SEE NOTE PROJECTION	14SEP2011 NAME SIZE DRAWING NO RESTRICTED TO	Zhongxiang Electron Science CO.,LTD SATA 7P VERTICAL A TYPE SMT PLUG
MATERIAL SEE NOTE DIMENSIONS: MM	WEIGHT DIMENSIONS: MM	SIZE DRAWING NO A3 C-09-0009	CUSTOMER DRAWING SCALE SHEET 1 OF 1 REV B1