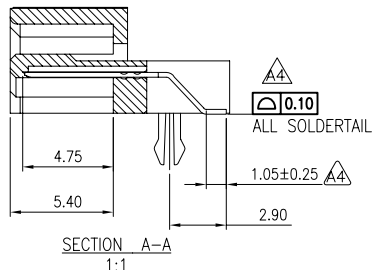
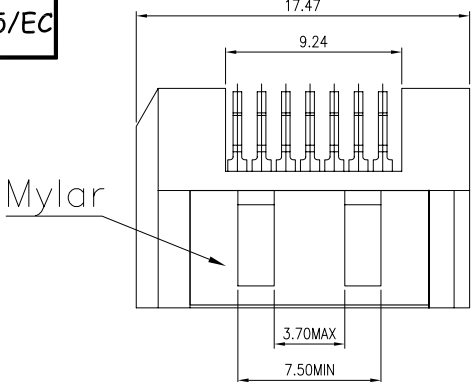


RoHS
2002/95/EC



NOTE:
PRODUCTS MUST CONFORM TO JS SPEC JS-GC03143-A1.
1.MATERIAL:
HOUSING: (SEE TABLE), UL94V-0; COLOR:SEE TABLE;
CONTACT: BRASS, T=0.25mm
BOARDLOCK :BRASS, T=0.30mm
2.FINISH:
CONTACT: (SEE TABLE) GOLD PLATING ON CONTACT AREA
2.54um [100μ"] MIN. (SEE TABLE) TIN PLATING ON SOLDERTAILS
1.27um [50μ"] MIN. NICKEL UNDERPLATING OVER ALL
BOARDLOCKS:2.54um [100μ"]MIN. BRIGHT TIN OVER 1.27um [50μ"] MIN.
NICKEL PLATED.
3.ELECTRICAL:
CONTACT RESISTANCE: 45 mΩ MAX.
DIELECTRIC WITHSTANDING VOLTAGE: 500V AC
CURRENT RATING: 1.5A
VOLAGE RATING: 12V AC
4.ENVIRONMENTAL:
OPERATING TEMPERATURE: -25°C TO +85°C

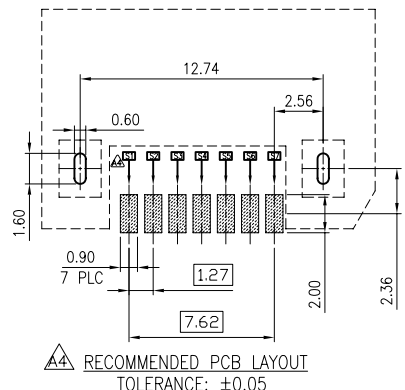
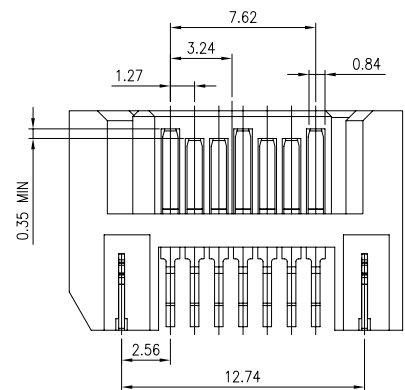
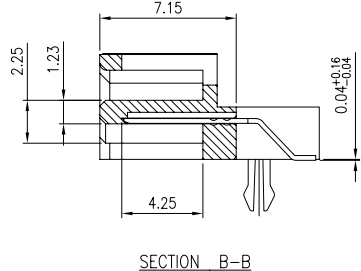
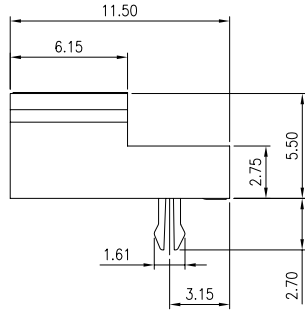
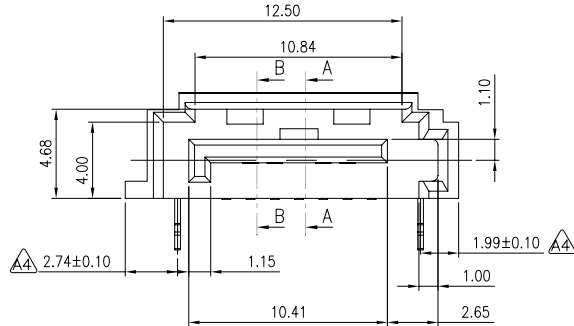


TABLE:

△4	BRIGHT-TIN	WITHOUT	NY6T	RED(191C)	G/F	09-0007-07
△4	BRIGHT-TIN	WITHOUT	NY6T	BULE(293C)	15μ"	09-0007-06
△4	MATTE-TIN	WITH	LCP	BLACK	G/F	09-0007-05
	BRIGHT-TIN	WITHOUT	LCP	BLACK	G/F	SA0711607FBOCBMO 09-0007-04
					15μ"	SA0711607FB00BMO 09-0007-03
			NY6T	G/F	SA0211607FBOCBMO 09-0007-02	
					BULE(293C)	SA0211607FLOGBMO 09-0007-01
TIN TYPE	Mylar	HOUSING	HOUSING COLOR	GOLD THICKNES	OLD PART NUMBER	NEW PART NUMBER

						TOLERANCES UNLESS OTHERWISE SPECIFIED		JS HAOGUO(Zhongxiang) Limited Company				
						X.	±0.30	X.'	±2'	Customers Drawing		TITEL: SATA 7P RIGHT ANGLE A TYPE SMT PLUG
						.X	±0.25	X.X'	±1'	Part No.	SEE TABLE	Scale 1 : 1
						.XX	±0.15	.XXX	±0.10	Old Part No.	C-09-0007-	Sheet 1 of 1
						.XXX	±0.10					
ECN(DCN) NO.	REV.	DATE	DESCRIPTION	CHANGE	APVD	APVD	DAVID_ZHONG	UNIT	mm	SIZE	A4	Third Angle Projection
	A4	11NOV13			KUANG	D.Z	DWN	JUANPING_KUANG				
	A3	26Oct09			A.X	D.Z	CHKD	GAVIN_CHEN				