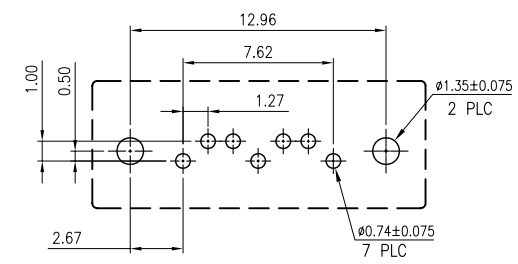
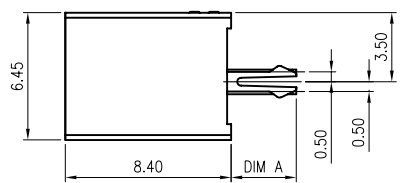
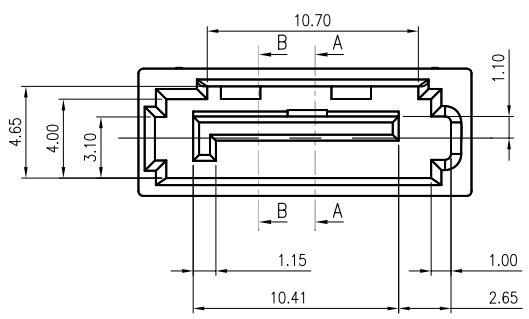
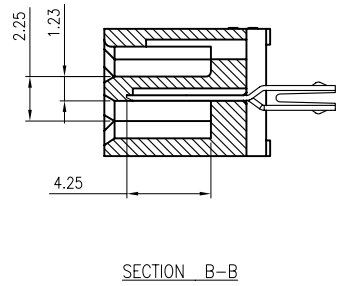
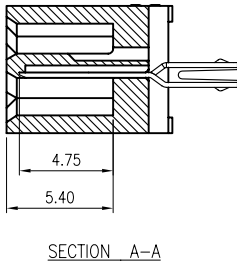
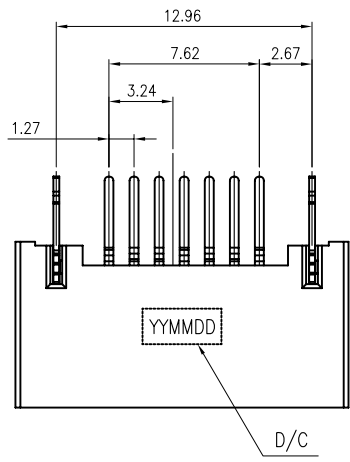
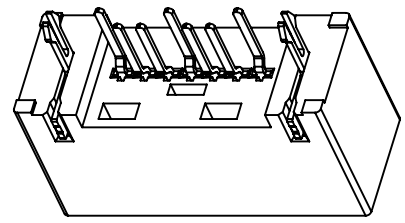
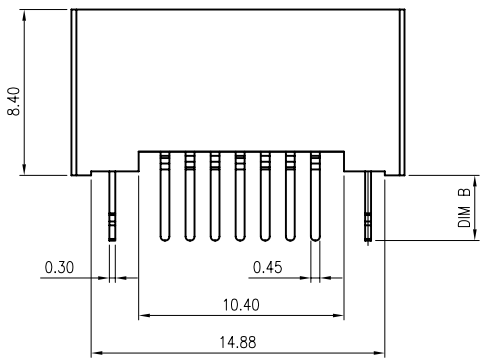


REV.	DESCRIPTION	DATE	DWN	APVD
A3		19DEC2012	AL	WZ
A4		06SEP2013	AL	DZ

NOTE:
 PRODUCTS MUST CONFORM TO JS SPEC JS-GC03143-A1.
 1.MATERIAL:
 HOUSING: (SEE TABLE), UL94V-0; COLOR:SEE TABLE;
 CONTACT: BRASS, T=0.25mm
 BOARDLOCK :BRASS, T=0.30mm
 2.FINISH:
 CONTACT: (SEE TABLE) GOLD PLATING ON CONTACT AREA
 2.54um [100μ"] MIN. (SEE TABLE) TIN PLATING ON SOLDERTAILS
 1.27um [50μ"] MIN. NICKEL UNDERPLATING OVER ALL
 BOARDLOCKS:2.54um [100μ"] MIN. (SEE TABLE) TIN OVER 1.27um [50μ"]MIN.
 NICKEL PLATED.
 3.ELECTRICAL:
 CONTACT RESISTANCE: 45 mΩ MAX.
 DIELECTRIC WITHSTANDING VOLTAGE: 500V AC
 CURRENT RATING: 1.5A
 VOLTAGE RATING: 12V AC
 4.ENVIRONMENTAL:
 OPERATING TEMPERATURE: -25°C TO +85°C



RECOMMENDED PCB LAYOUT
 TOLERANCE: ±0.05



REV.	DIM B	DIM A	HOUSING	HOUSING COLOR	BOARD LOCKS	SOLDER TAIL	GOLD THICKNES	NEW PART NUMBER	
	2.57±0.25	2.05±0.25	LCP	BLACK	BRIGHT TIN	BRIGHT TIN	15μ"	09-0005-09	
			NY66	Orange	MATTE TIN	MATTE TIN	15μ"	09-0005-08	
	3.30	3.30	LCP	BLACK	BRIGHT TIN	BRIGHT TIN	30μ"	09-0005-07	
					MATTE TIN	MATTE TIN	15μ"	09-0005-06	
			YES	NY6T	BULE(293C)	BRIGHT TIN	BRIGHT TIN	G/F	09-0005-04
					BLACK	15μ"	09-0005-03		
NO						09-0005-02			
D/C							09-0005-01		

TOLERANCES UNLESS OTHERWISE SPECIFIED:		DWN 06SEP2013		Zhongxiang Electron Science CO.,LTD	
0 PLC ± -	CHK Abel	APVD			
1 PLC ± 0.3	PRODUCT SPEC JS-GC03143-A1		NAME		
2 PLC ± 0.2	APPLICATION SPEC		SATA 7P VERTICAL A TYPE		
3 PLC ± 0.15	FINISH SEE NOTE		DIP PLUG		
4 PLC ± -	PROJECTION		SIZE A3	DRAWING NO C-09-0005	RESTRICTED TO
ANGLES ± 3°	DIMENSIONS: MM		CUSTOMER DRAWING	SCALE -	SHEET 1 of 1
MATERIAL SEE NOTE	WEIGHT		REV A4		