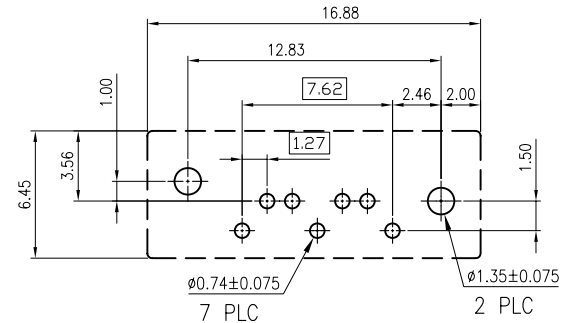
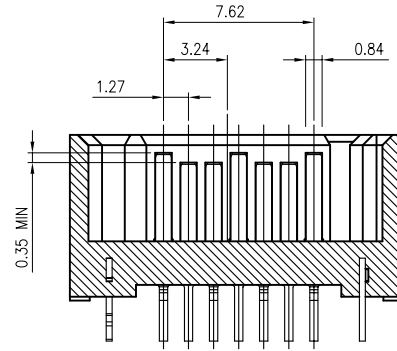
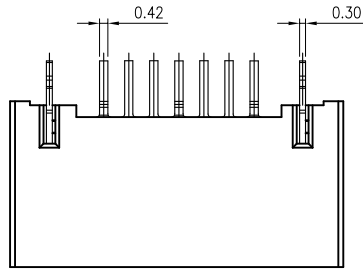
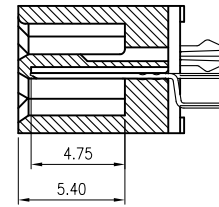
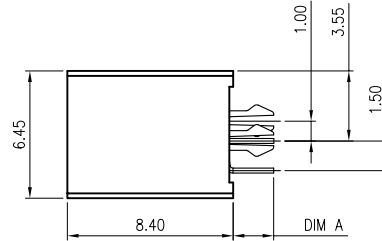
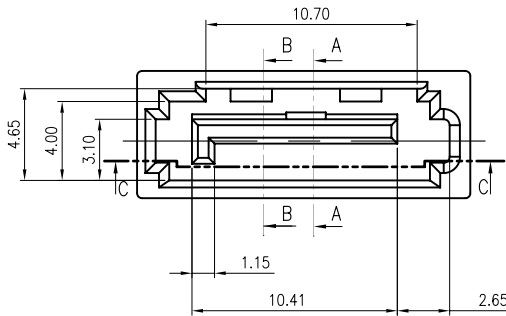


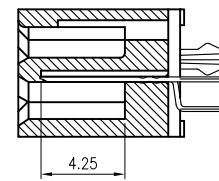
REV.	DESCRIPTION	DATE	DWN	APVD
A	RELEASED	28AUG09	A.X	J.Y
A1		11JAN10	A.X	J.Y



RECOMMENDED PCB LAYOUT  
TOLERANCE:  $\pm 0.05$



SECTION A-A



SECTION B-B

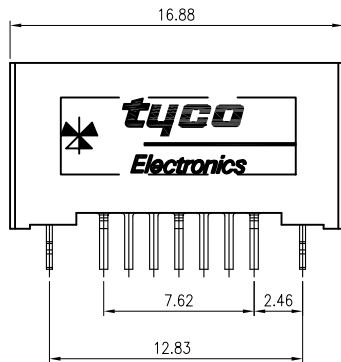
NOTE:  
PRODUCTS MUST CONFORM TO JS SPEC JS-GC03143-A1.

1.MATERIAL:  
HOUSING: NYLON6T, UL94V-0; COLOR: SEE TABLE  
CONTACT: BRASS. T=0.25mm  
BOARDLOCK :BRASS. T=0.30mm

2.FINISH:  
CONTACT: (SEE TABLE) GOLD PLATING ON CONTACT AREA  
2.54 $\mu$ m [100 $\mu$ "] MIN. MATTE TIN PLATING ON SOLDERTAILS  
1.27 $\mu$ m [50 $\mu$ "] MIN. NICKEL UNDERPLATING OVER ALL  
BOARDLOCKS:2.54 $\mu$ m [100 $\mu$ "] MIN. MATTE TIN OVER 1.27 $\mu$ m [50 $\mu$ "]MIN. NICKEL PLATED.

3.ELECTRICAL:  
CONTACT RESISTANCE: 45 m $\Omega$  MAX.  
DIELECTRIC WITHSTANDING VOLTAGE: 500V AC  
CURRENT RATING: 1.5A  
VOLAGE RATING: 12V AC

4.ENVIRONMENTAL:  
OPERATING TEMPERATURE: -25°C TO +85°C



TYCO LOGO	DIM A	HOUSING COLOR	GOLD THICKNES	OLD PART NUMBER	NEW PART NUMBER
NO LOGO	3.30	BULE(661C)	15 $\mu$ "	SB1210207FL1HGS1	09-0003-06
		BLACK		SB1210207FB0HFS1	09-0003-05
	2.40	BULE(661C)	G/F	SB1210207FL1HFS1	09-0003-04
		GRAY(1C)		SB1210207FSOFFS1	09-0003-03
WITH TYCO LOGO	3.30	BULE(661C)	15 $\mu$ "	SB1210207FL1HGS1	09-0003-06
		BLACK		SB1210207FB0HFS1	09-0003-05
	2.40	BULE(661C)	G/F	SB1210207FL1HFS1	09-0003-04
		GRAY(1C)		SB1210207FSOFFS1	09-0003-03
		BULE(293C)		SB1210207FLOFFS1	09-0003-02
		BLACK		SB1210207FB0FFS1	09-0003-01

TOLERANCES UNLESS OTHERWISE SPECIFIED:	DWN	11JAN2010
0 PLC $\pm$ -	ANDY XIAO	
1 PLC $\pm$ 0.3	CHK	11JAN2010
2 PLC $\pm$ 0.2	GAVIN CHEN	
3 PLC $\pm$ 0.15	APVD	11JAN2010
4 PLC $\pm$ -	JACKY YANG	
ANGLES $\pm$ 3'	PRODUCT SPEC	
MATERIAL	JS-GC03143-A1	
SEE NOTE	APPLICATION SPEC	
FINISH	-	
SEE NOTE	WEIGHT	
PROJECTION	DIMENSIONS:	MM

<b>Zhongxiang Electron Science CO.,LTD</b>			
NAME			
SATA 7P VERTICAL B TYPE DIP PLUG			
SIZE	DRAWING NO	RESTRICTED TO	
A3	C-09-0003	-	
CUSTOMER DRAWING	SCALE	SHEET	REV
	-	1 of 1	A1