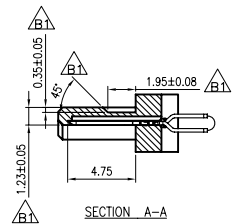
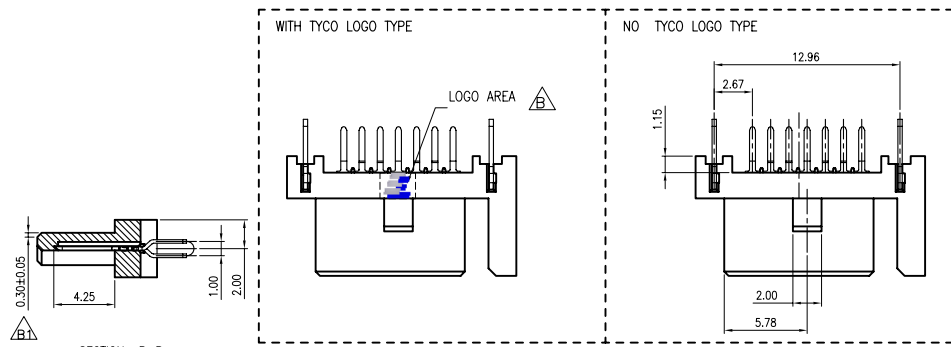


A  
B  
C  
D  
E  
F  
G  
H  
I  
J  
K  
L



NOTE:  
PRODUCTS MUST CONFORM TO JS SPEC JS-GC03143-A1.

1.MATERIAL:

HOUSING: (SEE TABLE), UL94V-0; COLOR:  
SEE TABLE

CONTACT: BRASS, T=0.25mm  
BOARDLOCK :BRASS, T=0.30mm

2.FINISH:

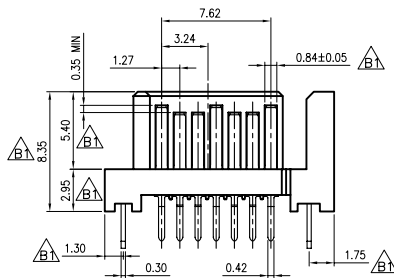
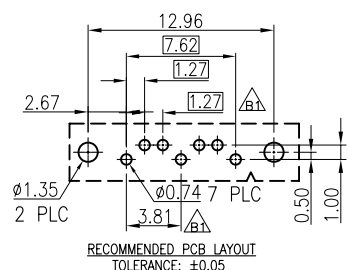
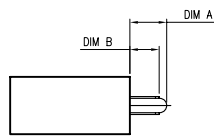
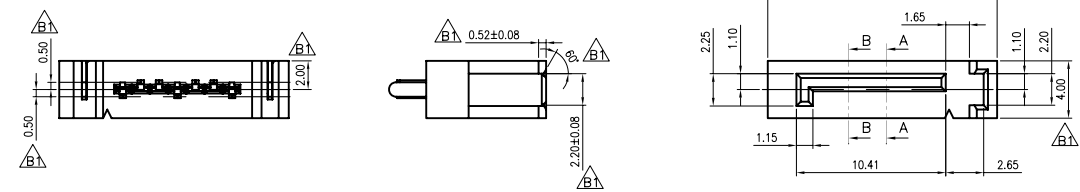
CONTACT: (SEE TABLE) GOLD PLATED ON CONTACT AREA  
2.54μm [100μ"] MIN. (SEE TABLE) TIN PLATING ON SOLDERTAILS  
1.27μm [50μ"] MIN. NICKEL UNDERPLATING OVER ALL  
BOARDLOCKS:2.54μm [100μ"]MIN. (SEE TABLE) TIN OVER 1.27um [50μ"] MIN.  
NICKEL PLATED.

3.ELECTRICAL:

CONTACT RESISTANCE: 45 mΩ MAX.  
DIELECTRIC WITHSTANDING VOLTAGE: 500V AC  
CURRENT RATING: 1.5A  
VOLTAGE RATING: 12V AC

4.ENVIRONMENTAL:

OPERATING TEMPERATURE: -25°C TO +85°C



TYCO LOGO	DIM A	DIM B	HOUSING	HOUSING COLOR	BOARDLOCKS	SOLDERTAILS	CONTACT	PART NUMBER	NEW PART NUMBER
NO TYCO LOGO	2.57	2.05	NY6T	RED(191C)	BRIGHT TIN	BRIGHT TIN	G/F	-----	09-0002-24
NO TYCO LOGO	2.57	2.05	NY6T	BULE(293C)	BRIGHT TIN	BRIGHT TIN	G/F	-----	09-0002-23
WITH TYCO LOGO	2.57	2.05	NY6T	BULE(293C)	BRIGHT TIN	BRIGHT TIN	G/F	S2-02F107097S1BC	09-0002-22
WITHOUT TYCO LOGO			LCP		MATTE TIN	MATTE TIN	G/F	-----	09-0002-21
WITHOUT TYCO LOGO			NY6T		BRIGHT TIN	BRIGHT TIN	15μ"	SCA209707FB00BS0	09-0002-20
WITHOUT TYCO LOGO	2.57	2.05		BLACK			G/F	SA0709707FB0M4S1	09-0002-19
WITHOUT TYCO LOGO							30μ"	SA0709707FB0K4S1	09-0002-18
WITHOUT TYCO LOGO								SA0709707FB0H4S1	09-0002-17
WITHOUT TYCO LOGO	3.37	2.85	LCP				15μ"	SCA710507FB0H0S1	09-0002-16
WITHOUT TYCO LOGO	3.37	3.30						SC5711007FB0HGS1	09-0002-15
WITHOUT TYCO LOGO								SC5711007FLOH0S0	09-0002-14
WITHOUT TYCO LOGO								SA0209707FLOH4S1	09-0002-13
WITH TYCO LOGO	2.57	2.05		BULE(293C)	MATTE TIN	MATTE TIN	G/F	SA0209707FLOM4S1	09-0002-12
WITH TYCO LOGO				WHITE				SA0209707FW0M4S1	09-0002-11
WITH TYCO LOGO	3.37	2.85		BULE(293C)				SCA210507FLOH0S1	09-0002-10
WITH TYCO LOGO				BLACK				SC5211007FB0H0S0	09-0002-09
WITH TYCO LOGO	3.37	3.30	NY6T	BULE(293C)			15μ"	SC5211007FLOHGS1	09-0002-08
WITH TYCO LOGO								SC5211007FLOH0S0	09-0002-07
NO TYCO LOGO				BLACK			30μ"	SCA209707FB00BS0	09-0002-20
NO TYCO LOGO				ORANGE(159C)	BRIGHT TIN	BRIGHT TIN	G/F	SCA209707FJ0ABS0	09-0002-06
NO TYCO LOGO	2.57	2.05						SCA209707FJ0CBS0	09-0002-05
NO TYCO LOGO								SCA209707FB0CBS0	09-0002-04
NO TYCO LOGO			LCP	BLACK	MATTE TIN	MATTE TIN	15μ"	SCA709707FB0HBS0	09-0002-03
NO TYCO LOGO	3.37	2.85			BRIGHT TIN	BRIGHT TIN		SCA709707FB00BS0	09-0002-02
NO TYCO LOGO								SCA710507FB00GS0	09-0002-01

ECN(DCN) NO.	REV.	DATE	DESCRIPTION	CHANGE	APVD	APVD	DAVID_ZHONG	UNIT	mm	SIZE	A4	Third Angle Projection
ECR10092901	B	05JUN10		A.X	J.Y	CHKD	CIYONG_JIANG	Drawing No.	C-09-0002	Sheet	1 of 1	
	B1	28NOV13		KUANG	D.Z	DWN	JUANPING_KUANG	Part No.		Scale	1:1	

JS HAOGUO(Zhongxiang) Limited Company

Customers Drawing TITEL: SATA 7P VERTICAL A TYPE DIP PLUG

TOLERANCES UNLESS OTHERWISE SPECIFIED  
X. ±0.30 X." ±2"  
.X ±0.25 X.X" ±1"  
.XX ±0.20  
.XXX ±0.10