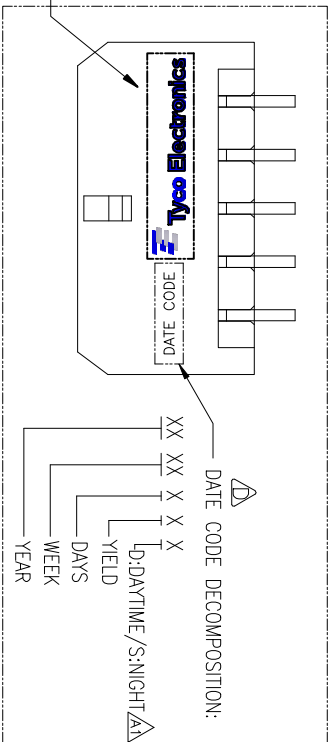
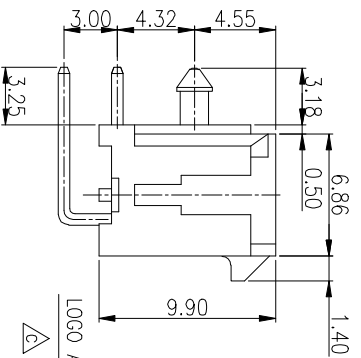
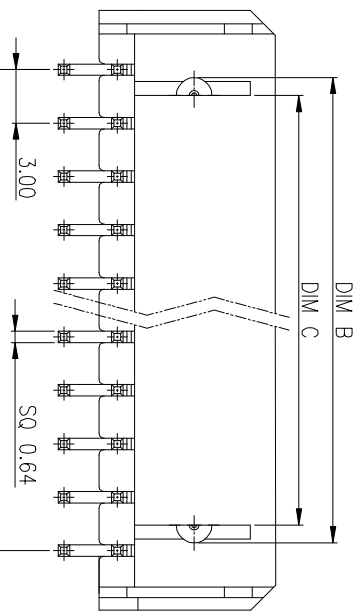


LOGO AND DATE CODE MARK  
(2X2P)

REV	DESCRIPTION	DATE	DWN	AP/D
A	RELEASED	08Jul09	YF	DZ
C	ECN10102801	28OCT10	G.C	D.Z
D	ECN11021002	09FEB11	ZH	D.Z

NOTE:

- MATERIAL:  
HOUSING: NY46 WITH 30% GF, UL 94V-0, COLOR: BLACK.  
CONTACT: BRASS
- CONTACTS: 2.54mm [100μ"] MIN. (SEE TABLE) TIN OVER  
1.27μm [50μ"] MIN. NICKEL PLATED.  
INSULATION RESISTANCE: 20 MΩ MAX.  
DIELECTRIC WITHSTANDING: 1000 V AC.  
CURRENT RATING: 2.5 A MAX.  
VOLTAGE RATING: 250V AC/DC MAX.
- ELECTRICAL:  
OPERATING TEMPERATURE: -40° TO +105°C
- ENVIRONMENTAL:



MODE (-) ▽

MODE (=) ▽

MODE	DATE	WITH	DIM D	DIM C	DIM B	DIM A	TERMINAL	POLES	OLD PRAT NO.	NEW PRAT NO.
---	12.00	9.10	11.10	13.65			MATTE TIN	2*5		03-0001-11
MODE(=)	3.00	1.40	3.40	9.65			MATTE TIN	2*2		03-0001-10
MODE(-)	3.00	1.40	3.40	9.65			MATTE TIN	2*2		03-0001-09
---	33.00	30.10	32.10	39.65			BRIGHT TIN	2*12		03-0001-08
MODE(-)	18.00	15.10	17.10	24.65			BRIGHT TIN	2*7		03-0001-07
---	27.00	24.10	26.10	33.65			BRIGHT TIN	2*10		03-0001-06
MODE(=)	12.00	9.10	11.10	18.65			MATTE TIN	2*5		03-0001-05
MODE(-)	3.00	1.40	3.40	9.65			MATTE TIN	2*2		03-0001-04
---	18.00	15.10	17.10	24.65			BRIGHT TIN	2*7		03-0001-03
---	27.00	24.10	26.10	33.65			BRIGHT TIN	2*10		03-0001-02
---	33.00	30.10	32.10	39.65			BRIGHT TIN	2*12		03-0001-01

**Zhongxiang Electron Science CO.,LTD**

BTX POWER CONNECTOR  
RIGHT ANGLE TYPE

TOLERANCES UNLESS OTHERWISE SPECIFIED:	0 P.L.C	± 0.3
1 P.L.C	± 0.2	
2 P.L.C	± 0.15	
3 P.L.C	± 0.1	
4 P.L.C	± 0.05	
ANGLES	± 3°	

RECOMMEND P.C.B. LAYOUT  
PCB TOLERANCE: ±0.05

2\*2PIN PCB LAYOUT

2\*1PIN PCB LAYOUT

FINISH	SEE NOTE
PROJECTION	SEE NOTE
DIMENSIONS	MM

SIZE	DRAWING NO.	CUSTOMER DRAWING	SCALE	SHEET	1 OF 1	REV	D
A3	C-03-0001						

A

B

C

D

8

7

6

5

4

3

2

1