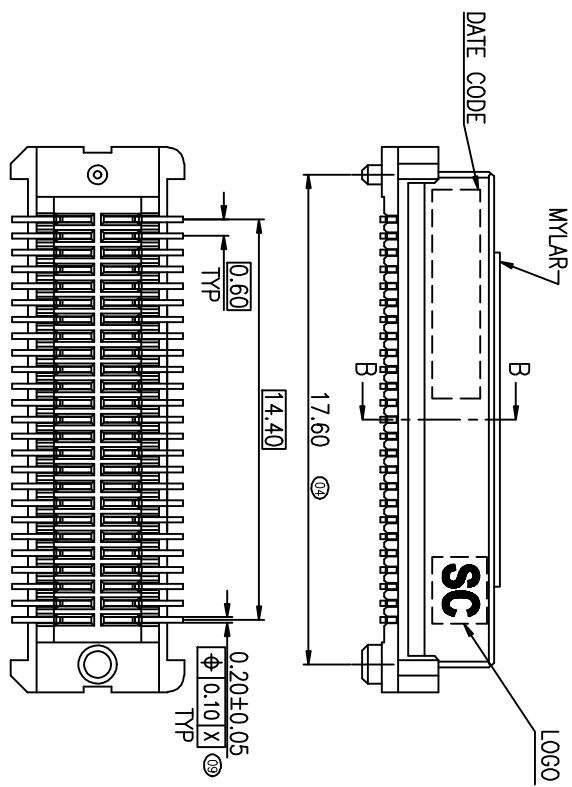
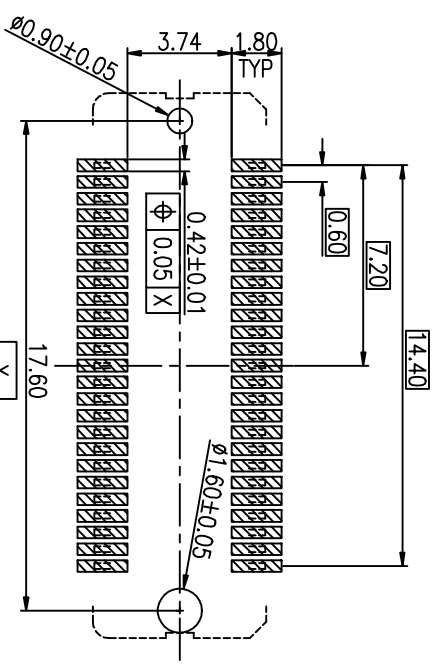
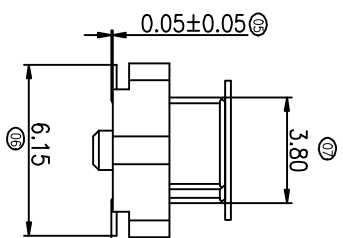
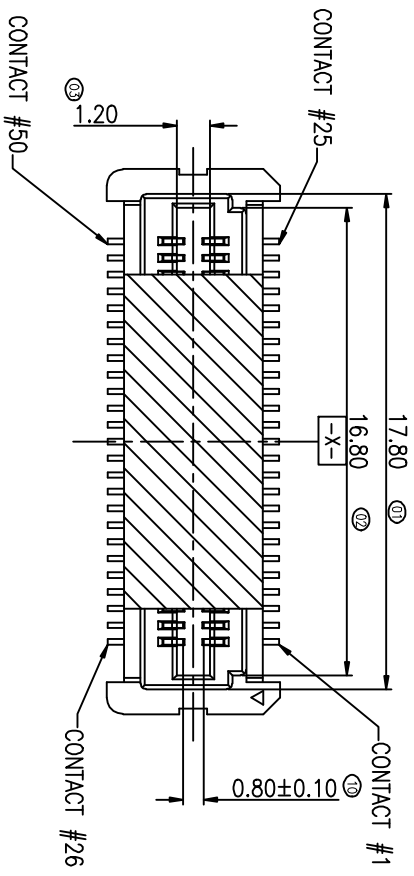


REV	DESCRIPTION	DATE	DMN	APD
A	RELEASED	30JUL2010	YJ	DZ

- NOTE:
- MATERIAL:
HOUSING: LCP UL 94V-0, COLOR: NATURAL.
CONTACTS: PHOSPHOR BRONZE
 - FINISH:
CONTACTS: 0.254um[10u"] MIN. GOLD PLATING ON CONTACT AREA,
3.05um [120u"] MIN. MATTE-TIN PLATING ON SOLDER TAIL,
WITH ENTIRE CONTACT UNDERPLATED 1.27um [50u"] MIN. NICKEL.
 - ELECTRICAL CHARACTERISTICS
 - CONTACT CURRENT RATING:0.5 AMPERE D.C MAX.,CONTINUOUS.
 - LOW LEVEL CONTACT RESISTANCE:70 MILLIOHM MAX.(INITIAL)
90 MILLIOHM MAX. AFTER PHYSICAL AND ENVIRONMENTAL TEST
 - DIELECTRIC WITHSTANDING VOLTAGE:500VAC FOR 1 MINUTE.
 - INSULATION RESISTANCE:100MEGOHMS MIN.
 - ENVIRONMENT PERFORMANCE
OPERATING TEMPERATURE RANGE: -40° TO+85°.



TOLERANCE:±0.05
RECOMMENDED PCB LAYOUT

Zhongxiang Electron Science CO.,LTD

0.6mm PITCH BOARD TO BOARD
CONNECTOR, 50 POSITION ,RECEPTACLE

TOLERANCES UNLESS OTHERWISE SPECIFIED: 0 P/C ± - 1 P/C ± 0.3 2 P/C ± 0.2 3 P/C ± 0.15 4 P/C ± - ± 3° ANGLES ± - ± 3°		DMN 30JUL2010 CHK C/TONG JIANG APD GAVIN CHEN PRODUCT SPEC DAVID ZHONG APPLICATION SPEC	NAME 0.6mm PITCH BOARD TO BOARD CONNECTOR, 50 POSITION ,RECEPTACLE
FINISH SEE NOTE PROTECTION SEE NOTE	DIMENSIONS: MM	SIZE DRAWING NO A3 C-13-0002	RESTRICTED TO
MATERIAL SEE NOTE		WEIGHT	CUSTOMER DRAWING SCALE 1 OF 1 REV A
APPLICATION SPEC		DIMENSIONS: MM	SHEET 1 OF 1 REV A

8 7 6 5 4 3 2 1