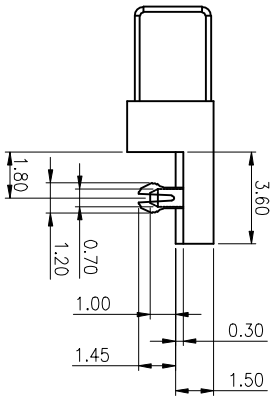
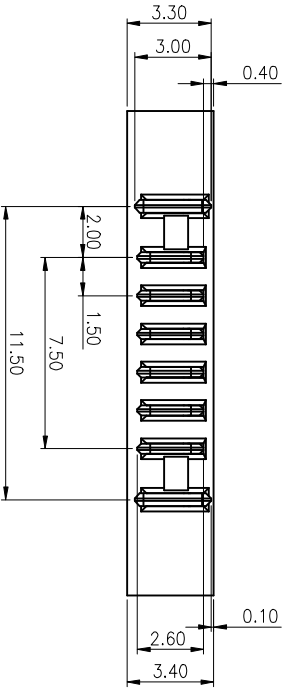
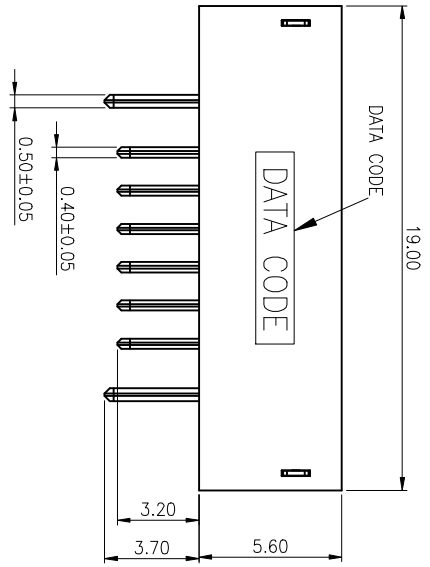
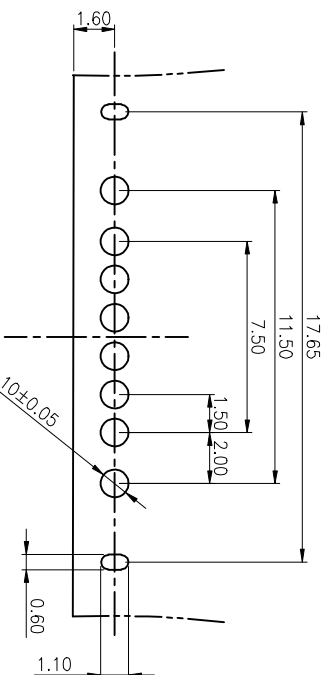


ROHS
2002/95/EC

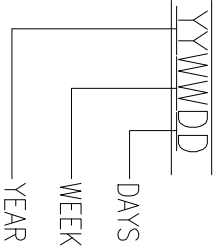


- SPECIFICATION:
PRODUCTS MUST MADE G/P STANDARD.
1. ELECTRICAL CHARACTERISTICS:
1-1. LOW LEVEL CONTACT RESISTANCE(DRY CIRCUIT): 20 MILLIOHMS MAX. INITIAL.
1-2. DIELECTRIC WITHSTANDING VOLTAGE: 500VAC AT SEA LEVEL.
1-3. INSULATION RESISTANCE: 100 MEGOHMS MIN INITIAL.
2. PERFORMANCE
2-1. VOLTAGE RATING: 30V DC. MAX. PER CONTACT.
2-2. CURRENT RATING: 7.0 Amps
2-3. OPERATING TEMPERATURE: -40°C TO +85°C.
3. MECHANICAL
3-1. DURABILITY (MATING/UNMATING CYCLES): 5000 CYCLES.
3-2. MATING FORCE : 0.12Kgf~1.8Kgf
UNMATING FORCE : 0.10Kgf~1.5Kgf



TOLERANCE: ±0.05
RECOMMENDED PCB LAYOUT

NO.	DESCRIPTION	QTY	MATERIAL	COLOR	REMARK
4	BOARDLOCK	2	C2680		TIN PLATED
3	TERMINAL2	6	C2680		GOLD PLATED FOR CONTACT AREA THINLY FINISH ON THE AREA
2	TERMINAL1	2	C2680		GOLD PLATED FOR CONTACT AREA THINLY FINISH ON THE AREA
1	HOUSING	1	HIGH TEMPERATURE BLACK		UL94V-0



ECN(DCN) NO.	REV.	DATE	DESCRIPTION	CHANGE	APVD
	A	13/01/15	modify	XL	DZ
	R0	12/11/23	NEW RELEASE	XL	WZ

TOLERANCES UNLESS OTHERWISE SPECIFIED	
X: ±0.30	X*: ±2*
X: ±0.25	X*X: ±1*
XX: ±0.15	
XXX: ±0.10	

NO.	DESCRIPTION	QTY	MATERIAL	COLOR	REMARK
4	BOARDLOCK	2	C2680		TIN PLATED
3	TERMINAL2	6	C2680		GOLD PLATED FOR CONTACT AREA THINLY FINISH ON THE AREA
2	TERMINAL1	2	C2680		GOLD PLATED FOR CONTACT AREA THINLY FINISH ON THE AREA
1	HOUSING	1	HIGH TEMPERATURE BLACK		UL94V-0

JS HAOGUO(Zhongxiang) Limited Company

Customer's Drawing	Part NO.	Drawing NO.	UNIT	SIZE	Sheet
XIAOXU_LIU	02-0010-01-G	C-02-0010	mm	A4	1 of 1

